

FRAMEWORK
HAZARD
CONSTRUCTION
FOUNDATIONS
SCAFFOLDING



SALEX SALES CORPN.
AN ISO 9001:2015 COMPANY

About us

We are a Ludhiana based manufacturer and exporters that pride on service, safety, ability and performance. Being one of the top contenders of the field, we are a team that values and understands your requirements, besides adding quick suggestions to save your time, energy and money

We believe no job is too big or too small, so place great emphasis on building long term relationship with customers. Since our inception, we are continuously exporting in more than 50 countries from last 25 years and delivered the best being part of several successful projects, and have so earned a solid reputation.

Unlike others our product maintains its value for years, making your financial investment, a smart one.



CAPABILITY

At Salex, all our products are made from highest complied international quality standards that are thoroughly tested by qualified bodies. Meeting demands from the smallest of requirements to complete packages, our unit has the resources and capabilities to meet deadlines in the quickest possible manner.

Our highly trained and knowledgeable professionals provide you comprehensive advice, assistance and technical expertise. Our key strength is diversity in all sectors, which is good business sense not to be fully reliant on single area of the marketplace. Every day we challenge ourselves through ingenuity, hard work and professionalism to work with integrity being the most respected scaffolding groups of the country.

It is the great honor that drives us to continually invest in our people that deliver excellent service with aid of our strong manufacturing plant. From our own point of view, we look ahead to consolidate our position, even if it calls for restructuring, because it's all about growth.

With total support we grow from strength-to-strength and remain open to the possibility of collaborating with others that fit our ethos and objectives.

AN ISO 9001:2015 CERTIFIED



Why Choose Us



PRODUCT

Offering a full range of scaffolding equipments we serve all businesses sectors with small to big parts with choices. As a result we maximize your turnaround times faster besides minimizing your downtime.



PEOPLE

Any business cannot achieve success without its people. At Salex, we developed a dedicated team of people with firm commitment that benefit everyone from the people working inside to the customers outside.



PROCESS

From using highest quality manufacturing materials to hiring reliable manpower to making sound judgment and being always open to negotiation, these are the key elements that make us a favored supplier.

infrastructure

Located in Ludhiana, Punjab (India), our state-of-the-art infrastructure sprawls over a large area. It has been built along the guideline laid down by architects of modern architecture. This infrastructure has been divided into varied sections for the purpose of better quality control in different production process. Provision is also made for connection these sections, with the help of tarred roads. We have also made efforts to equip all the sections with pollution control equipment. The infrastructural facility has been divided into the following section :

- Raw Material procurement department
- Mechanical Engineering Department
- Designing Department
- Technical Department
- Quality Checking Department
- Sales & Marketing Department
- Administrative Department
- Logistics Department



Upon completion of forging method the test result and other pertinent information will be documented in a detailed Certified Test Report for your record. Testing is offered for the principal mechanical properties of interest to designers in the forging industry, including strength, ductility and hardness.

- Hardness Testing
- Tensile Testing
- Charpy Impact
- Fracture Toughness
- Bend



DROP FORGED COUPLERS

Forged Swivel Coupler



SSC-001

Available in - 48mm x 48mm

48mm x 60mm

Finish - Electrogalvanized

Forged Right Angle Coupler



SSC-002

Available in - 48mm x 48mm

48mm x 60mm

Finish - Electrogalvanized

Girder Coupler



SSC-003

Available in - 50mm, 75mm, 100mm

Finish - Electrogalvanized

Half / Single Coupler



SSC-004

Finish - Electrogalvanized

Toe Board Bracket /
Board Retaining Coupler



SSC-005

Finish - Electrogalvanized

Putlog Coupler



SSC-006

Finish - Electrogalvanized

Salex Sales Corpn.

scaffold couplers

PRESSED STEEL COUPLERS

Swivel Coupler



SSC-007

Available in - 48mm x 48mm

48mm 60mm

Finish - Electrogalvanized

Right Angle Coupler



SSC-008

Available in - 48mm x 48mm

48mm 60mm

Finish - Electrogalvanized

Sleeve Coupler



SSC-009

Finish - Electrogalvanized

Staircase Coupler



SSC-010

Finish - Electrogalvanized

Roofing Coupler



SSC-011

Finish - Electrogalvanized

Fencing Coupler



SSC-012

Finish - Electrogalvanized

PRESSED STEEL COUPLERS

Expandable Joint Pin



SSC-013

Finish - Electrogalvanized

Spigot Pin



SSC-014

Finish - Electrogalvanized

Universal Coupler



SSC-015

Finish - Electrogalvanized

Timber Walling Coupler



SSC-016

Finish - Electrogalvanized

Ladder Coupler



SSC-017

Finish - Electrogalvanized

Shuttering Clamp



SSC-018

Material of Strip - Cold Rolled Mild Steel

Material of Wedge - Drop Forged Steel

Flat Strip Sizes - 25x5mm - 8mm, 30x5mm - 8mm

Length - 70, 80, 90, 100, 120, 150cm

Finish - Painted

Salex Sales Corpn.

cuplock scaffolding system & accessories

Cuplock Ledger



SSC-019

Available in - 0.50mtr. to 3.0mtr.

Finish - Self Finish, Electrogalvanized & Painted

Cuplock Standard



SSC-020

Available in - 0.50mtr. to 3.0mtr.

Finish - Self Finish, Electrogalvanized & Painted

Components of Cuplock

Top Cup



SSC-021

Material - Cast Iron / Drop Forged

Bottom Cup



SSC-022

Material - Mild Steel Plate

Ledger Blade



SSC-023

Material - Drop Forged Steel

Wedge Plate



SSC-024

Material - Cast Iron

Drop Head with Socket Base



SSC-025

Material - Cast Iron, Mild Steel Plate

FORMWORK ACCESSORIES

Tie Rod



SSC-026

Material - Mild Carbon Steel, EN8 (High Carbon Steel)
Breaking Load - 120-130 KN, > 150 KN
Finish - Self Finish, Electrogalvanized

Washer Plates



SSC-027

Material - Mild Steel Plate
Available Sizes - Length x Width - 120mm x 120mm 110mm x 110mm, 100mm x 100mm
Thickness - 4mm to 12mm
Finish - Electrogalvanized

Wing Nut



SSC-028

Material - Cast Iron
Available Weight - App 200gsm, 280gsm, 360gsm
Finish - Electrogalvanized

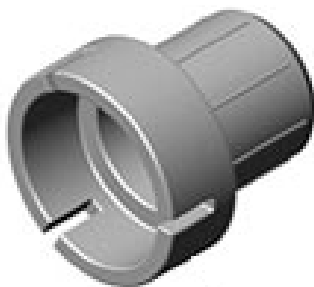
Water Stopper



SSC-029

Material - Cast Iron
Available Weight - App 450gsm, 500gsm
Finish - Electrogalvanized, Self Finish

PVC Adaptors of Water Stopper



SSC-030

Material - Made from HDPE
Available in a set of 2 pcs.

Tie Rod Connectors



SSC-031

Material - Mild Steel Round
Available Length - 50 / 70 / 90 / 100 / 105 / 110mm
Finish - Electrogalvanized, Self Finish

Salex Sales Corpn.

FORMWORK ACCESSORIES

Rapid Clamps



SSC-032

Material of the Base - Cast Iron
Material of the Wedge - High Carbon Forged Steel
Available for - 8mm, 10mm and 12mm rebar
Finish - painted, Electrogalvanized

Anchor Nuts 2 Wing



SSC-033

Material of the Base - Cast Iron & Forged Steel
Base Dia - 70mm, 80mm, 90mm, 100mm
Weight per piece - App. 400gsm, 420gsm, 480gsm
Finish : Electrogalvanized

Anchor Nuts 3 Wing



SSC-034

Material of the Base - Cast Iron & Forged Steel
Base Dia - 70mm, 100mm
Weight per piece - App. 460gsm, 600gsm
Finish : Electrogalvanized

Scaffolding Lock Pins



SSC-035

Material - Mild Steel Round
Available Size - 12mm x 50mm, 16mm x 50mm
Finish - Electrogalvanized, Self Finish

Slope Nut



SSC-036

Material of the Base & Nut - Cast Iron
Weight per piece - App. 1.3kgs.
Finish - Electrogalvanized

Spring Clamps



SSC-037

Material - Mild Steel
Finish - Electrogalvanized, Self Finish

Universal Jacks



SSC-038

Available in - 650mm, 750mm, 850mm 950mm

Finish - Self Finish, Electrogalvanized

Adjustable Base Jacks



SSC-039

Available in - 450mm, 550mm, 650mm 750mm

Finish - Self Finish, Hot Dip Galvanized

Jack Nuts



SSC-040

Material - Cast Iron, Drop Forged

Available in - 32, 34, 36, 38 & 48mm od Pipes / Rods

Finish - Electrogalvanized

Adjustable U Head / Stirrup Head Jacks



SSC-042

Available in - 450, 550, 650, 750, 850, 950mm

Finish - Electrogalvanized, Hot Dip Galvanized

Base Plates



SSC-041

Finish - Electrogalvanized

Salex Sales Corpn.

Props & accessories

Prop Sleeve



SSC-043

Available Length - 205, 220, 300 & 350mm
O.D. - 60mm, 75mm
Thickness - 2.7mm to 4.5mm
Finish - Self Finish, Painted, Electrogalvanized

Prop Nuts



SSC-045

Material - Cast Iron
Finish - Self Finish, Painted, Electrogalvanized

Lock Pin G Type



SSC-047

Material - High Carbon Steel Round
Finish - Electrogalvanized

Prop Complete



SSC-044

Finish - Self Finish, Painted, Hot Dip Galvanized

Top / Base Plates of Props



SSC-046

Material - Mild Steel Plate
Available Sizes - Length x Breadth - 150x150mm
120x120mm,
Thickness - 4mm to 8mm
Finish - Self Finish

Lock Pin G Type



SSC-048

Finish - Self Finish, Painted, Hot Dip Galvanized

Threaded Bar



Bolts / Nuts / Washers



Bar Hingers



Decorative Hanger with or without Bearings



Salex Sales Corpn.

H20 Beams



Wood Scaffolding Plank



Our safety standards for scaffold used in the construction industry has very specific requirement for the performance of scaffold planking. Primarily, it "must be able to support without failure, it's own weight and at least four times the intended load. Secondly, when fully loaded the plank cannot deflect more than 1/60 of the span. Only very high quality planks are able to meet these performance standards.

We ensure that we provide scaffold planks according to the specific safety standards.





We offers steel tubes and pipes
as per following National and International Standards.

TECHNICAL DATA OF BLACK & GALVANIZED PIPES

SPECIFICATION IS : 1239 (PART-1) 2004 - DIN 2439, DIN 2440, DIN 2441
(EQUIVALENT BS: 1387:1985/EN 10255 : 2004* / EN 10240: 1998/ DIN 2444)

Normal Bore & Series	OUTSIDE DIAMETER		WALL THICKNESS		NORMAL MASS OF STEEL TUBE			
	Max MM	Min. MM	MM	SWG	PLAIN END		SCREWED & SOCKED	
					Kg/M	Mtrs/Tonne	Kg/M	Mtrs/Tonne
15L	21.4	21.0	2.0	14	0.947	1056	0.956	1046
15M	21.8	21.0	2.6	12	1.21	826	1.22	820
15H	21.8	21.0	3.2	10	1.44	694	1.45	690
20L	26.9	26.4	2.3	13	1.38	725	1.39	719
20M	27.3	26.5	2.6	12	1.56	641	1.57	637
20H	27.3	26.5	3.2	10	1.87	535	1.88	532
25L	33.8	33.2	2.6	12	1.98	505	2.00	500
25M	34.2	33.3	3.2	10	2.41	415	2.43	412
25H	34.2	33.3	4.0	8	2.93	341	2.95	339
32L	42.5	41.9	2.6	12	2.54	394	2.57	389
32M	42.9	42.0	3.2	10	3.10	323	3.13	319
32H	42.9	42.0	4.0	8	3.79	264	3.82	262
40L	48.4	47.8	2.9	11	3.23	310	3.27	306
40M	48.8	47.9	3.2	10	3.56	281	3.60	278
40H	48.8	47.9	4.0	8	4.37	229	4.41	227
50L	60.2	59.6	2.9	11	4.08	245	4.15	241
50M	60.8	59.7	3.6	9	5.03	199	5.10	196
50H	60.8	59.7	4.5	7	6.19	162	6.26	160
65L	76.0	75.2	3.2	10	5.71	175	5.83	172
65M	76.6	75.3	3.6	9	6.42	156	6.54	153
65H	76.6	75.3	4.5	7	7.93	126	8.05	124
80L	88.7	87.9	3.2	10	6.72	149	6.89	145
80M	89.5	88.0	4.0	8	8.36	120	8.53	117
80H	89.5	88.0	4.8	6	9.90	101	10.10	99
100L	113.9	113.0	3.6	9	9.75	103	10.00	100
100M	115.0	113.1	4.5	7	12.20	82	12.50	80
100H	115.0	113.1	5.4	5	14.50	69	14.80	68
125M	140.8	138.5	4.8	6	15.90	63	16.40	61
125H	140.8	138.5	5.4	5	17.90	56	18.40	54
150M	166.5	163.9	5.8	6	18.90	53	19.50	51
150H	166.5	163.9	5.4	5	21.30	47	21.90	46

SALEX SALES CORPN.

INDIA OFFICE : 5-A, Opp. Manju Cinema, G.T. Road, Ludhiana.

Ph. : 0091-98140 80244, 0091-98787-87617

E-mail : info@salexsales.com, vijaypuri161@gmail.com

DUBAI OFFICE : 223, Baniyas Square Besaide,

Mount Royal Hotel, Deira, Dubai, U.A.E.

Ph. : 00971-56716 3388 E-mail : vijaypuri161@gmail.com

www.salexsales.com